



SOHORAID SR4-SB31+

Hardware RAID 5 Storage with Touch Button

Provides USB-C and eSATA interface, supports USB PD and 2nd Monitor Expansion

SR4-SB31+ provides hardware RAID 0/5/ JBOD function and supports 4 x 3.5"/2.5" SATA hard drive or SSD. Easily setting up and power on/off via the new touch button design. 24W USB PD function can charging the notebook or smart phone when connected. And expansion the 2nd monitor via the display port at the rear side. The design follows the industrial design concept of STARDOM, the aluminum chassis and handle, integrate data protection and mobility perfectly. It is suitable for use in various creative territory.

Features

1. New touch button design for setting and power on/off
2. LCM for system monitor
3. Supports USB-C interface, plug and play, and eSATA interface
4. Supports Hardware RAID 0/5/JBOD
5. Display port for 2nd monitor expansion
6. 24W USB PD for notebook/smart phone charging
7. Supports 4 x 3.5"/2.5" SATA hard drive/SSD, hot-swappable
8. Aluminum chassis, sturdy and helpful for heat dissipation
9. Adjustable fan speed and mute function
10. Supports Windows and macOS

One USB-C Cable

More Power, More Pixels



2nd Monitor expansion

SR4-SB31+ comes with one Display port for 2nd monitor expansion, which support DP 1.1a, the resolution can support up to 4K@30Hz. it's convenient for the user who need to edit and review the Photo/Video at the same time.

24W USB Power Delivery (USB-PD)

USB Power Delivery (USB-PD) introduces fast charging technology and unified cables standards for the USB Developer Forum (USB-IF). SR4-SB31+ can provide up to 24W power charging to the host when the cable is connected. And auto switch between 5V/3A(15W), 9V/2A(18W) and 12V/2A (24W).*

★ Notebook will need to support 5V/9V/12V charge.

Configure, Monitor, No Software Needed.

Configure, setup and monitor system status via front panel LCM without installing any software. SR-SB31+ is ready to use right out of the box to start protecting your data or enhance your digital content creation workflow.

The benefit of Touch Button

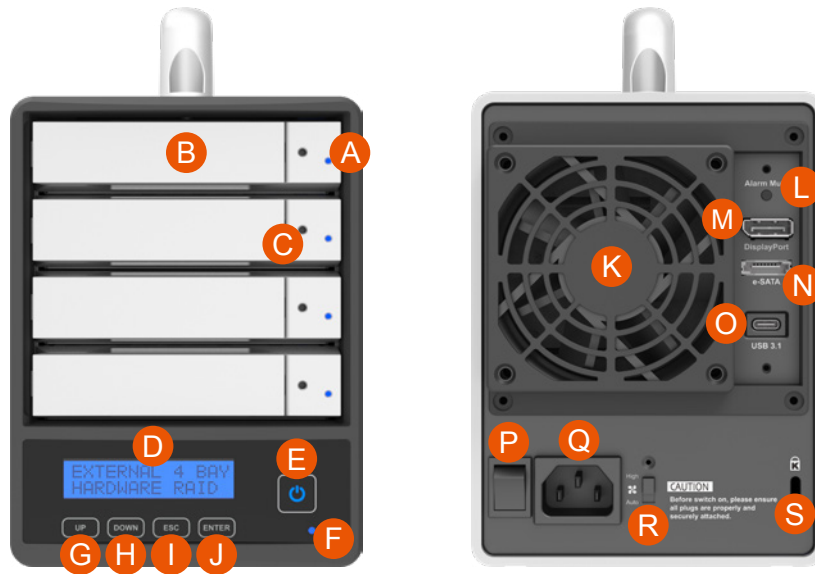
The newly exterior of SR4-SB31+ is designed with the touch button for power and setting function for the user friendly. Firstly User just need to turn on the power switch on the backplane and can touch power on and off the device for ease use at all the times.

It also has the special design on the power-off mode to avoid the users accidentally touch the power and the device shut down immediately. All features make SR4-SB31+ is not only a more safety product but also has the elegant outlook.

User-friendly LCM display

Equipped with clear readable LCM display and LED indicators for system monitoring during operation, so users can easily grasp the status of the system at all times. Moreover, it comes with visual and audio alarms whenever failure occurs.





- | | | |
|------------------------------|-----------------|----------------------|
| A. HDD access light | G. UP button | M. Display port |
| B. HDD enclosure handle | H. DOWN button | N. e-SATA port |
| C. HDD enclosure pin release | I. ESC button | O. USB3.1 port |
| D. LCM display | J. ENTER button | P. Power main switch |
| E. Power touch switch | K. Fan | Q. Power socket |
| F. System status light | L. Mute button | R. Fan speed switch |
| | | S. Anti-theft lock |

Technical Specification

SR4-SB31+/SR4-SB31+B	
Interface	<ul style="list-style-type: none"> • 1 x USB 3.1 Gen1 USB-C (5Gbps) • 1 x e-SATA port • 1 x DisplayPort (DP1.1a)
USB Power Delivery	• Support 24W (12V/2A)/18W (9V/2A)/15W (5V/3A) Power Delivery
Compatible Drive	2 x 3.5"/2.5" SATA III HDD/SSD (up to 6 Gbps)
Certification	CE/FCC
Storage Mode	RAID 0, 5, JBOD
Operating System Support	Windows 7 or above, OS X 10.10 or above
Electrical and Operating Requirements	<ul style="list-style-type: none"> • Line voltage: 100-240V AC • Frequency: 50Hz to 60Hz, single phase • Operating temperature: 32° to 104° F (0° to 40° C) • Storage temperature: -4° to 116° F (-20° to 47° C) • Relative humidity: 5% to 95% noncondensing
Size	Height : 168 mm Width : 125 mm Depth : 212 mm
Product Code	SR4-SB31+ EAN : 4713227440646 UPC : 884826505273 SR4-SB31+B EAN : 4713227440653 UPC : 884826505235
Carton	4 pcs per carton
Package Accessories	<ul style="list-style-type: none"> • SR4-SB31+/SR4-SB31+B x 1 (with 3.5" / 2.5" removable drive tray enclosed x 4) • USB3.1 Cable x 1 (USB-C to USB-C) Cable x 1 (USB-IF Certified) • e-SATA Cable x 1 • Power Cable x 1 • Handle x 1 • Quick Installation Guide x 1 • Screws & Pins