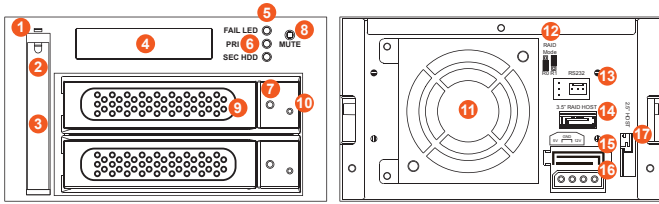


PD3500+ Quick Installation Guide

Package Contents and Product Views



- 1. 2.5" HDD status indicator LED
- 2. 2.5" HDD tray ejector opening
- 3. 2.5" HDD removable tray
- 4. LCD Display
- 5. LED of failure Alarm
- 6. Pri. HDD status indicator
- 7. Sec. HDD status indicator
- 8. Mute Button
- 9. Removable drive tray
- 10. HDD tray key lock
- 11. Cooling fan
- 12. RAID mode switch
- 13. RS232 Port
- 14. 3.5" SATA Port
- 15. 15 PIN SATA Port
- 16. 4Pin Power socket
- 17. 2.5" SATA Port

Open the package and you should find the following:

PD3500+
PD3500+ X1(with removable drive tray enclosed x 3)
Internal RS232 Cable x 1
External RS232 Cable x 1
SATA Cable x 1
CD x 1
Accessories Kit bag x 1
Quick Installation Guide x 1

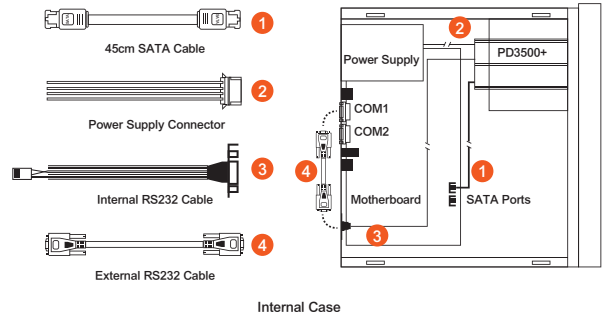
Please make sure that the contents listed above are not damaged or missing. If you should find damages or missing contents, please contact your supplier immediately.
v1 (June.2015)

Hardware Requirements and Precautions

1. Computers or servers with SATA I & SATA II & SATA III.
2. Hard drive with SATA I & SATA II & SATA III.
3. You are strongly advised to set the storage mode (the default is the Independent mode) before using the PD3500+.
4. The product allows the user to simultaneously utilize two hard drives manufactured by different companies. However, if the user expects better efficiency, we strongly recommend the users to use hard drives manufactured by the same manufacturer.
5. Please make sure that the two hard drives are free from bad blocks or defects prior to installation in order to avoid system crashes or data loss.
6. The actual storage capacity of PD3500+ recognized by the system may differ from the total capacity stated on the hard drives combined once the drives have been formatted.
7. It is highly recommended for users to back up important data contained within the PD3500+ unit on a regular basis or whenever the user feels necessary to a remote or a separate storage device. Stardom will not be responsible for any lost of data caused during the use of the unit or the recovery of the data lost.

Hardware Installation Procedure

- Please follow the instructions below to complete the hardware installation.
- Step 1 Open the package and take out the product making sure that all the enclosed contents are not damaged or missing. Should you find damages or missing contents, please contact your supplier immediately.
 - Step 2 Place the system on a stable surface. Ensure that it is well ventilated without blockage to the vent and kept away from areas near water and damage prone areas.
 - Step 3 Use the key included in the accessory kit and inserted into the key access opening to eject the removable drive tray latch and extract the removable drive tray.
 - Step 4 Mount your hard drives onto the removable drive tray and secure it with the screws included in the accessory kit to avoid any damage to the hard drive due to accidental movements.
 - Step 5 When the hard drive installation has been completed, insert the hard drive tray into the system horizontally and secure the latch into place.
 - Step 6 Use the preferred cable included to connect your computer to the relative interface connection on the PD3500+ unit.



Setting the Hard Drive Array Mode

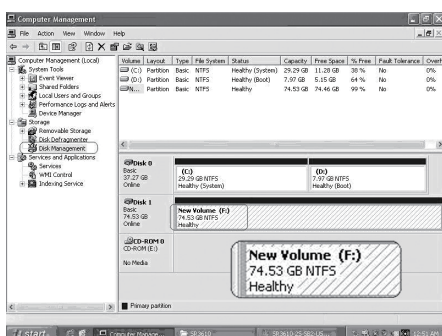
Please select the RAID mode with the jumper located at the back panel. The original default is RAID 1, still there are three pins at the back panel for RAID mode selection: RAID 0 mode by setting the jumper on the bottom of the two pins. RAID 1 mode by setting the jumper on the top of the two pins.

1. RAID 1 Mode
 - 1). Place two new hard drives into PD3500+ and strongly suggest you to use two identical hard drives to get the equal capacity. If the capacity is different, PD3500+ is downward to the small hard drive capacity.
 - 2). Under RAID 1 mode, two hard drives has the identical information as one to mirror to the other one, therefore each of the hard drive failed is still able to function normally. When you replace the failed hard disk to the new one the system automatically rebuilding the data to the newly place hard disk.
2. RAID 0 Mode
 - 1). Place two new hard drives into PD3500+ and strongly suggest you to use two identical hard drives to get the equal capacity. If the capacity is different, PD3500+ is downward to the small hard drive capacity.
 - 2). Under RAID 0 mode, capacity is add up to a one big volume, also with the feature of faster read/write performance efficient.

Computer Set Up

When the hardware setup for PD3500+ is complete, you are now ready to turn the machine on. After the hardware installation is complete, the PD3500+ will be treated as one single hard drive. Set the hard drive to AUTO in the computer's BIOS. When the computer is turned on, the system will retrieve the following information:

1. In PD3500+, the installed hard drive can be detected by the Device Manager of Computer Management for Windows.
2. Customers can choose to format the hard drive by using the Disk Management tool of the operating system before using the PD3500+.



At this point, the installation process is completely finished. The user can freely retrieve and save data to PD3500+ just like retrieving and saving data to a regular hard drive.

LCD Display and LED Indicators

1. Booting and Normal status.

PD3500+
RAID-1 vxxxxxx.x

Pri HDD : OK
Sec HDD : OK

Status	Alarm LED	Primary HDD status LED		Secondary HDD status LED		Buzzer
		HDD1	HDD2	HDD1	HDD2	
Power On	---	Orange / light on	Blue and Purple / blinking	---	---	---
Standby	---	Orange / light on	Blue / light on	---	---	---
HDD Failure	Red / light on	---	Red / light on	---	---	On
Access	---	Orange / light on	Blue and Purple / blinking	---	---	---
Rebuilding(Source)	---	Orange / light on	Blue / light on	---	---	---
Rebuilding(Target)	---	---	Red / blinking on	---	---	---
Fan Failure	Red / light on	Orange / light on	Blue / light on	---	---	On
Over Heat	Red / light on	Orange / light on	Blue / light on	---	---	On

Thank you for choosing product from RAIDON Technology Inc. This information in the manual has been thoroughly checked before publication, but may not conform to the product actually delivered which mean actual product specifications depend on the product shipped to you. Any update in the specifications or product-related information shall not be subject to further notice but for the latest information on the product, please visit the website as www.STARDOM.com.tw or contact us at supporting@raidon.com.tw, and we will get back to you as soon as possible.