

STARDOM
STORAGE SOLUTIONS

SOHOTANK

ST4-TB

User Manual

Introduction

Thank you for purchasing STARDOM products. This manual will introduce the ST4 Series. Before using your ST4, please read this manual thoroughly. Although all information contained in this user manual has been carefully verified before publishing, however, the actual product specification will be based on the time of delivery from STARDOM. Any updates to the product specifications or relevant information may be found on www.stardom.com.tw. Products are subject to change without prior notifications.

If you have any questions regarding the products of STARDOM, or you would like to know the latest product information, user manual update, or firmware update, please contact your local supplier or visit www.stardom.com.tw for further information.

Copyright © RAIDON TECHNOLOGY, INC. All rights reserved.

Table of Contents

1. Operating Information
2. Package Contents and Product Views
3. Hardware Requirements and Precautions
4. Hardware Installation
5. GUI Management Software
6. Visual Status Indicator Definitions
7. Frequently Asked Questions

1. Operating Information

Operating Temperature : 10 ~ 35 °C (50 ~ 95 °F)

Storage Temperature : -20 ~ 47°C (-4 ~ 116 °F)

Line Voltage : 100 ~ 240V AC

2. Package Contents and Product Views

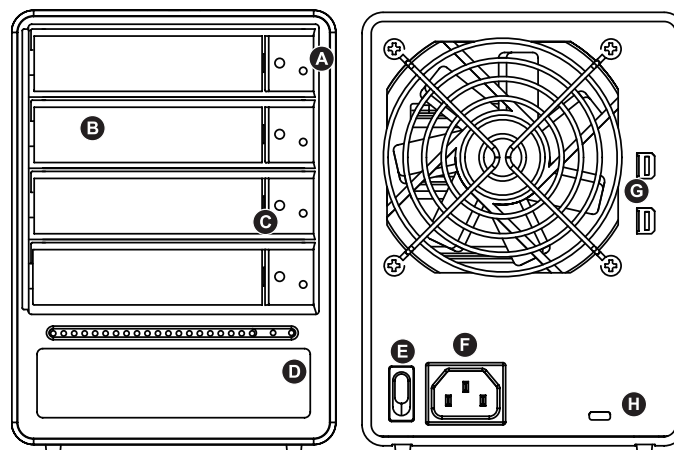
Open the package and you should find the following:

ST4-TB
ST4-TB x 1 (with removable drive tray enclosed x 4)
Thunderbolt cable x1
AC Power Cable x 1
Accessories Kit
CD (User Manual / Software) x 1

Please make sure that the contents listed above are not damaged or missing. If you should find damages or missing contents, please contact your supplier immediately.

Front and Rear View

- A. Hard drive status indicator
- B. Removable drive tray
- C. Key access opening
- D. Power indicator
- E. Power Switch
- F. Power socket
- G. Thunderbolt
- H. Anti-theft cord slot



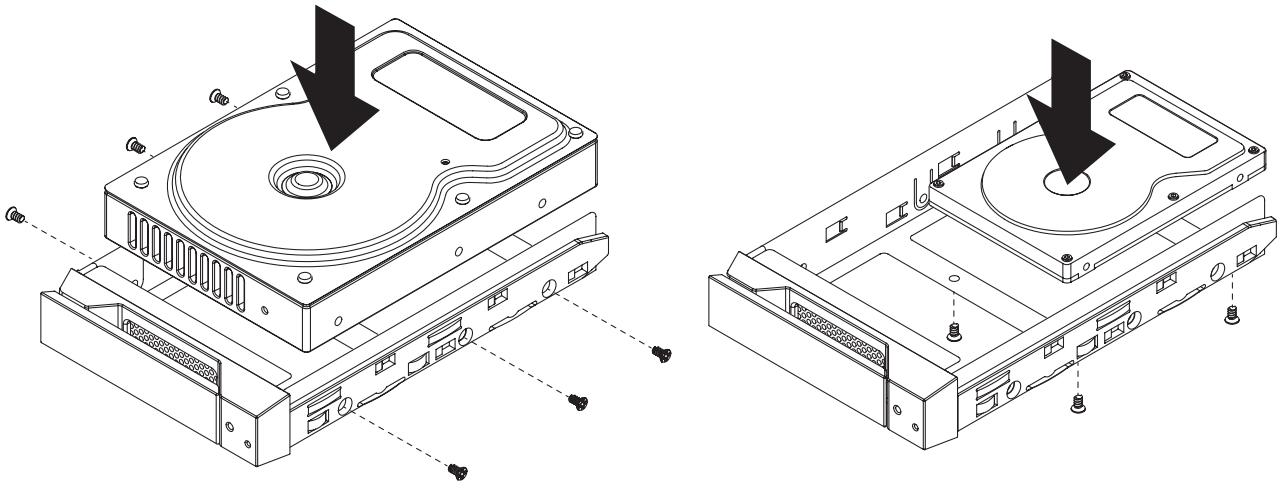
3. Hardware Requirements and Precautions

1. Please make sure that the hard drives are free from bad blocks or defects prior to installation in order to avoid system crashes or data loss.
2. Whenever turning off or unplugging the ST4 Series from your computer system becomes necessary, always remember to safely remove it from your operating system first.
3. When the ST4 is connected to the computer system, it's prohibited to remove, insert or swap the hard drive while data transfer is being performed.
4. If you will be incorporating either software or hardware RAID functionality to operate with the ST4 Series, it is important to understand the RAID level and its component that will be incorporated and the precautions to take as each RAID level and component may function differently and contains various limitations.
- 5.

6. It is highly recommended for users to back up important data contained within the drives of the ST4 Series on a regular basis or whenever the user feels necessary to a remote or a separate storage device. STARDOM will not be responsible for any lost of data caused during the use of the ST4 Series or the recovery of the data lost.

4. Hardware Installation

Please follow the instructions below to complete the hardware installation.



- Step 1 Open the package and take out the product making sure that all the enclosed contents are not damaged or missing. Should you find damages or missing contents, please contact your supplier immediately.
- Step 2 Place the enclosure on a stable surface, ensure that it is well ventilated without blockage to the vent and kept away from locations near water or where the product may become vulnerable resulting in damages.
- Step 3 Use the provided key in the accessories kit and inserted into the key access opening to eject the removable drive tray latch and extract the removable drive tray.
- Step 4 Mount your hard drives onto the removable drive tray and secure it with the screws included in the accessory kit to avoid any damage to the hard drive due to accidental movements.
- Step 5 Choose one of the provided cables of your preference to connect the preferred interface connection on the enclosure unit to the computer.
- Step 6 Attach the AC power cable to the power socket. Once completed, you may power on the unit.

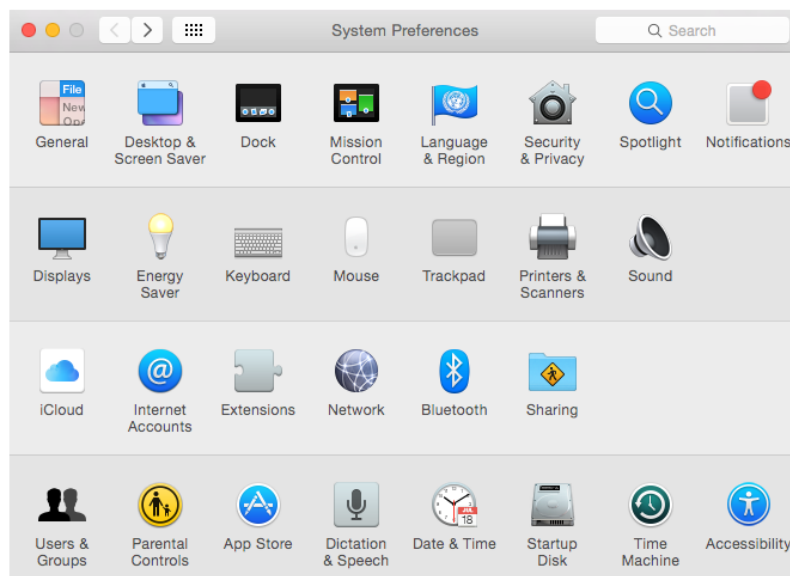
Once your computer has also booted, your operating system should recognize the drive automatically. If the hard drive installed requires formatting, follow the formatting instructions given by the operating system to format the drive volume to your preference. Once the formatting has been completed, the device is ready for use.

5. GUI Management Software

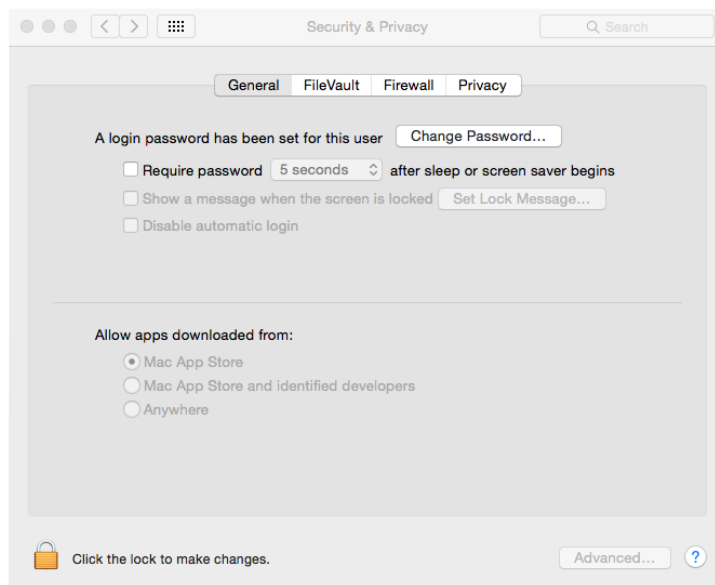
1. Installation of Monitoring Software

Please install from product CD in the accessory package or download it from www.stardom.com.tw.

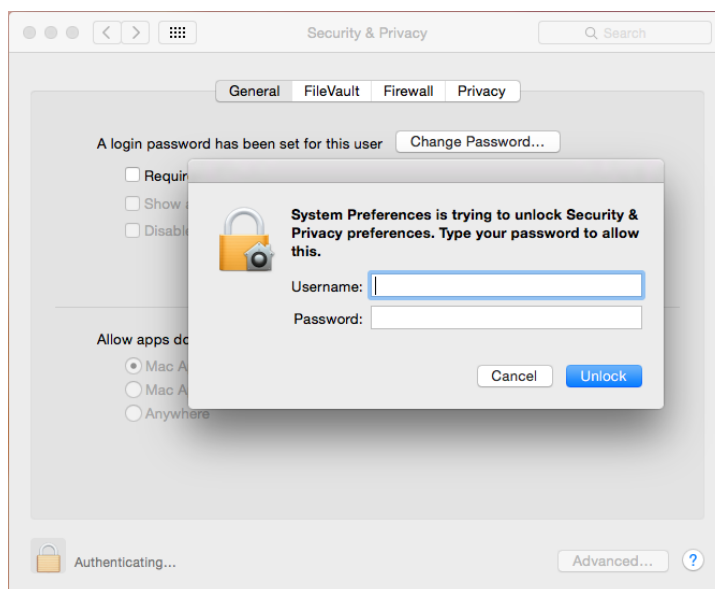
Step 1. Select "Security & Privacy" under "System Preferences".



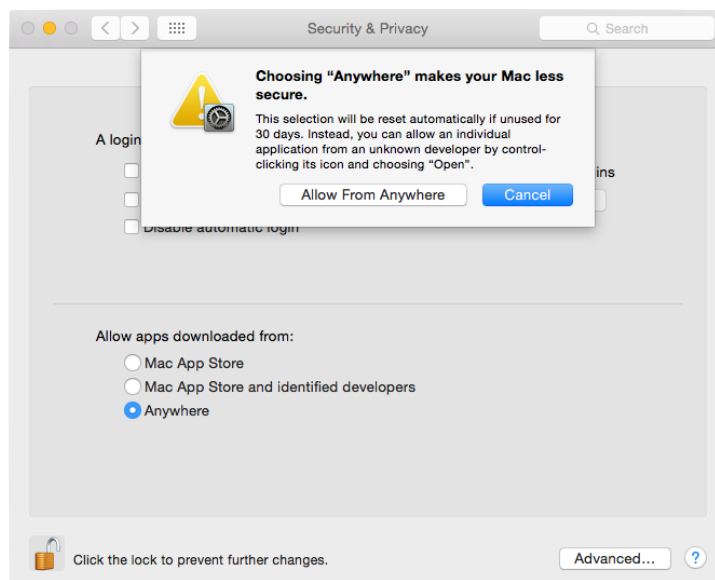
Step 2. Click on the lock icon from the bottom-left corner to unlock settings under “General”.



Step 3. Insert your “Username” & “Password” for the computer.

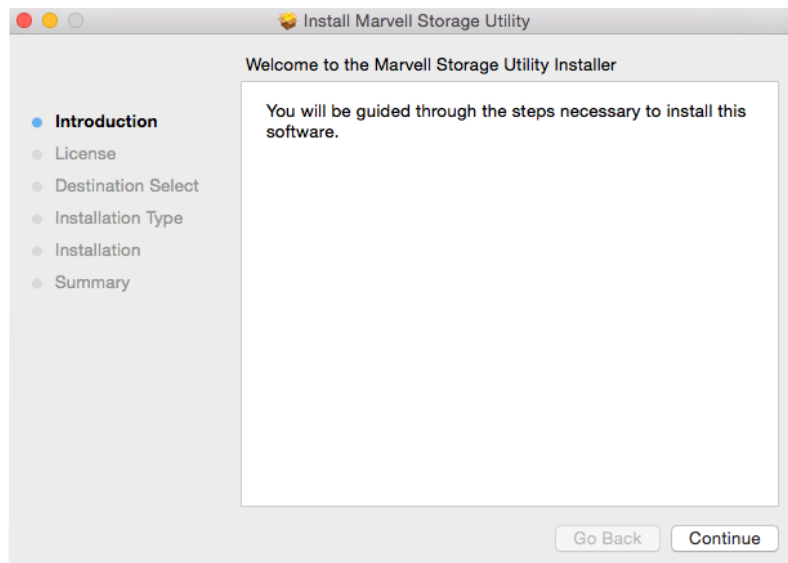


Step 4. Select “Allow From Anywhere” for App downloads.

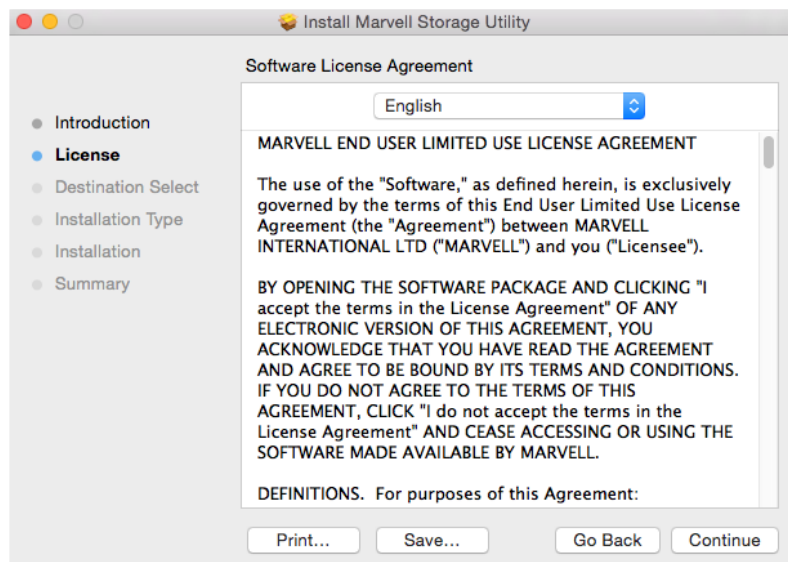


Step 5. Click on the lock icon from the bottom-left corner to lock settings.

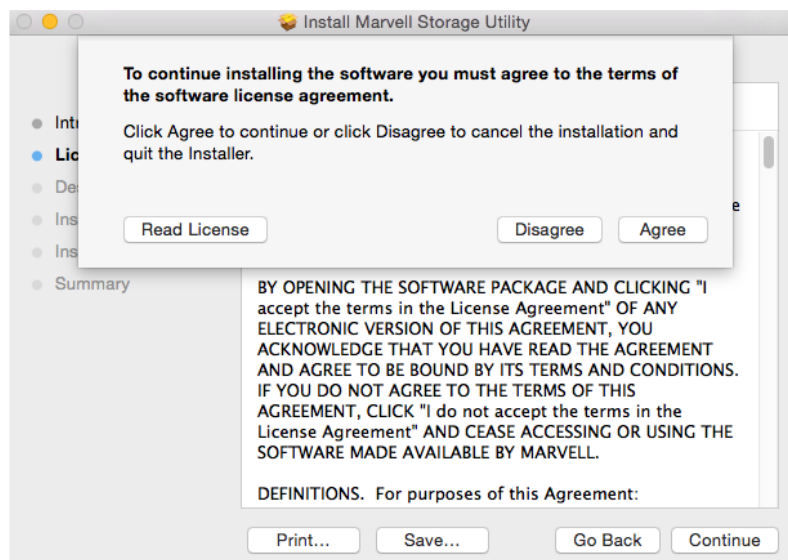
Step 6. Run MSU application to proceed installation for “Introduction” > “License” > “Destination Select” > “Installation Type” > “Installation” > “Summary”, and please click on “Continue” for “Introduction”.



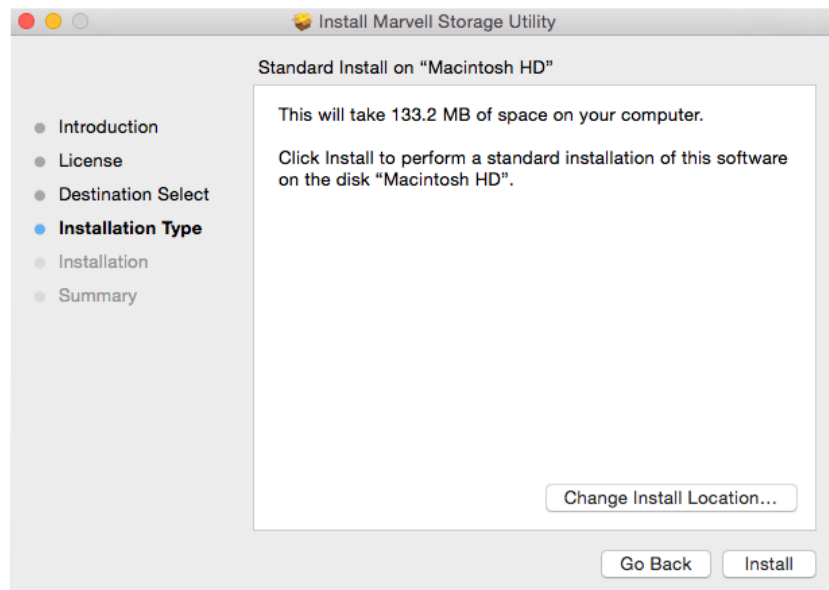
Step 7. Please click on “Continue” for “License”.



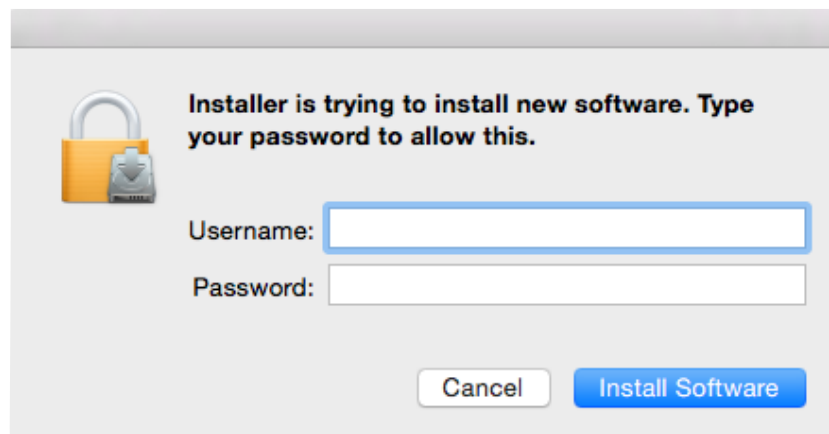
Step 8. Please click on “Agree” in the popped-up dialogue of “License” to continue.



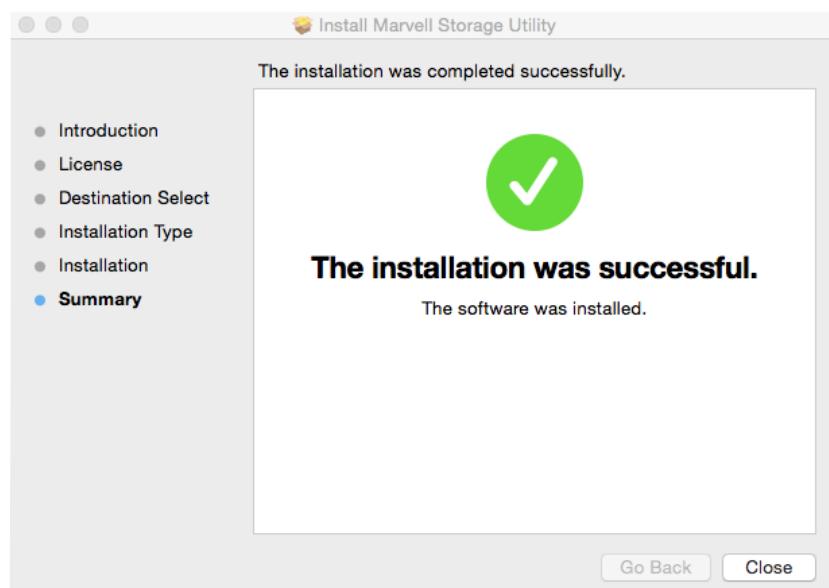
Step 9. "Installation Type" indicates the size of space will occupy, please click on "Install".



Step 10. Insert your "Username" & "Password" for the computer then please click on "Install Software" to continue.



Step 11. Software installation completed, please click on "Close" button to exit installation.

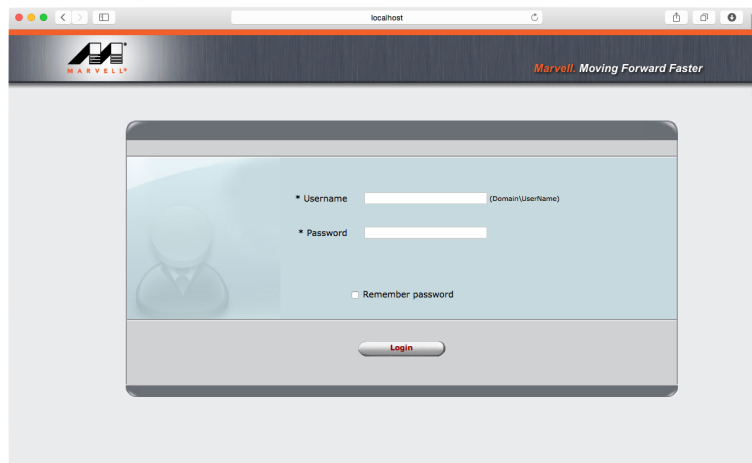


Step 12. Please launch the monitoring software after restarting the computer from software installation.

2. Operation of Monitoring Software

Before operating MSU, please verify ST4-TB has already connected to the computer with HDD installed and powered on. Please choose enterprise standard HDD for surveillance with identical brand and capacity.

Step 1. Insert your "Username" and "Password" for the computer.

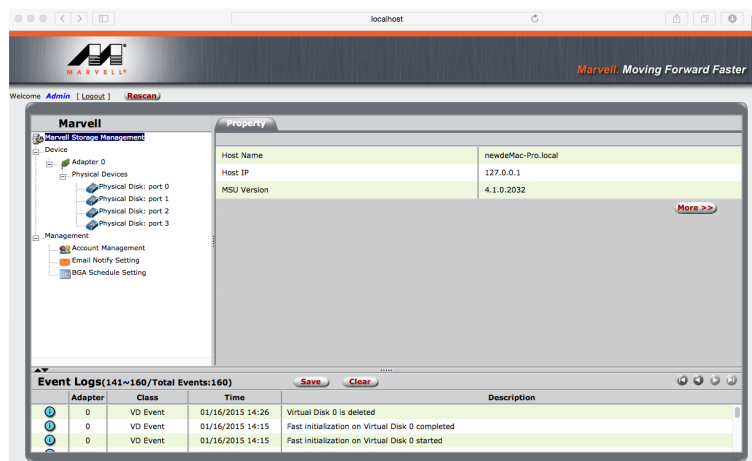


Step 2. 3 setting options can be found on the left of managing window as for "Marvel Storage Management", "Device" and "Management".

Marvel Storage Management: Host Name, IP address and MSU version.

Device: RAID configurations and information of installed HDD

Management: Configurations of E-Mail notification for incidents.



3. RAID Settings

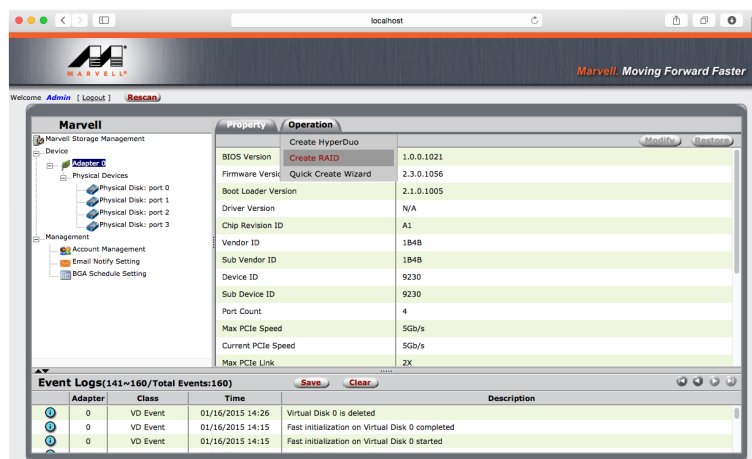
A. If installed HDD was used for RAID on other devices, please assure that previous RAID info in HDD has been successfully removed/erased and HDD has been reformatted.

B. Please backup all data before configuring/changing to desire RAID mode.

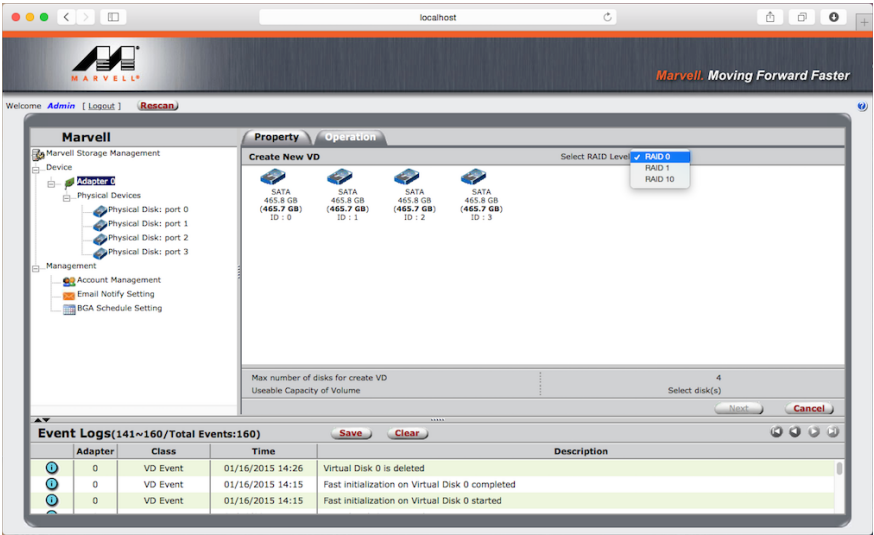
C. JBOD: To use individual capacity of each installed HDD.

D. RAID-0: Only enhances the performance of data accessing, it does not provide backup/fail-safe for stored data.

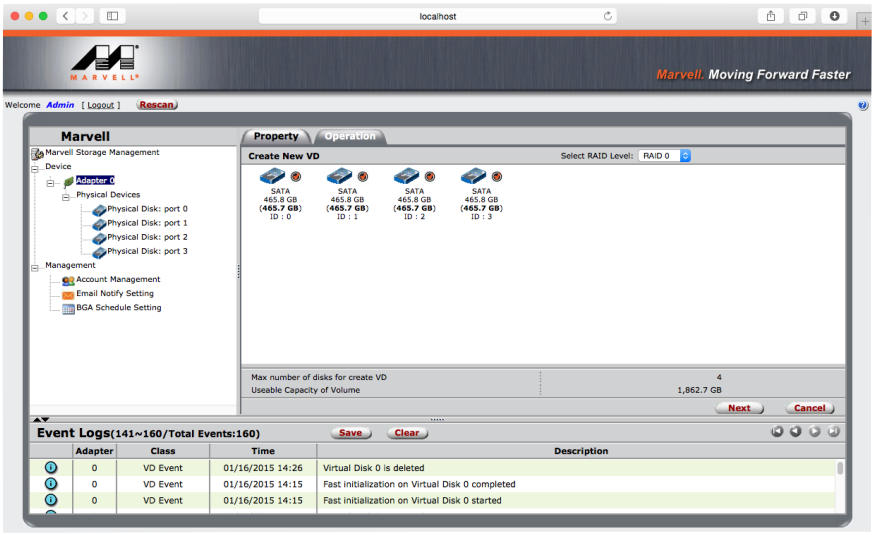
Step 1. Please select "Device" > "Adapter" > "Operation" > "Create RAID".



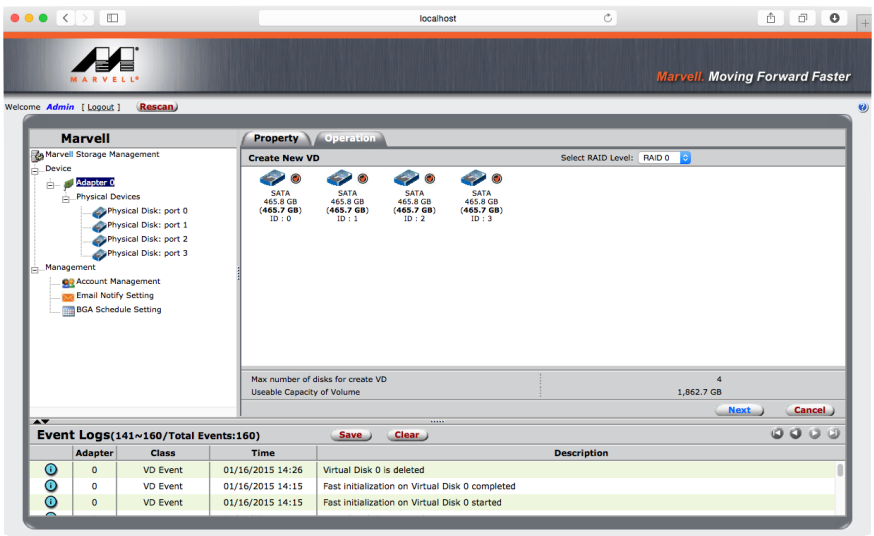
Step 2. Choose for desired RAID level.



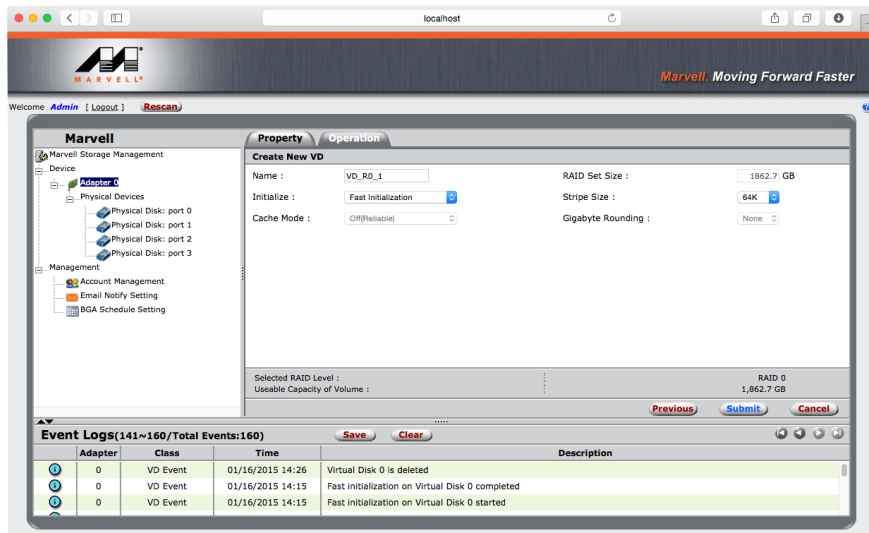
Step 3. Please select desired HDD(s) for proceeding with RAID configuration.



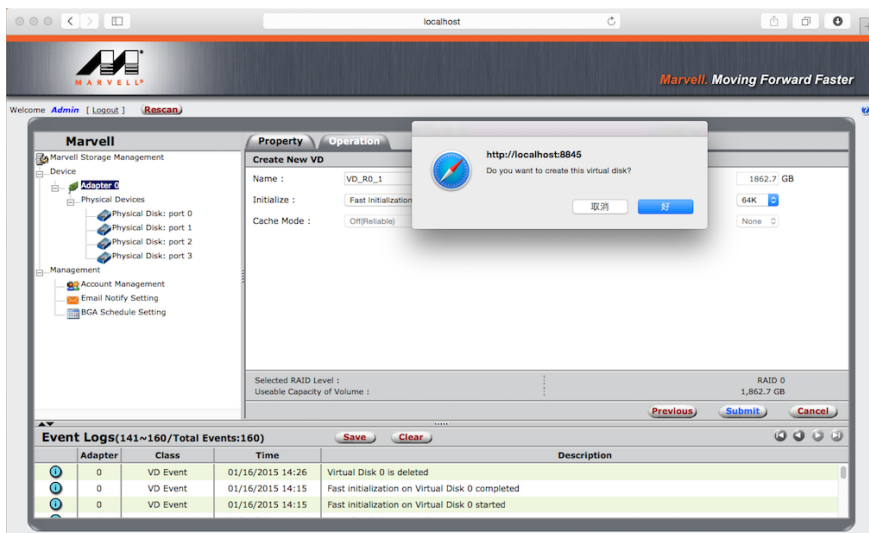
Step 4. Please verify RAID level and number of HDD selected are indicated correctly, and then click on “Next” to continue.



Step 5. Please verify selected RAID level and relevant information are indicated correctly, and then click on “Submit” to continue.



Step 6. Click for confirmation in the popped-up dialogue to proceed with selected RAID level.

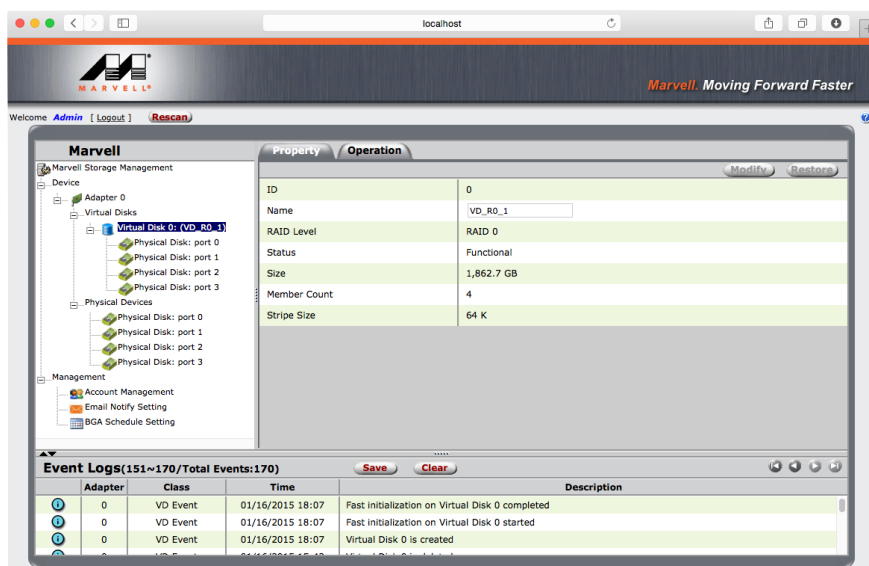


Step 7. RAID level completed

The naming sequences of adapter set assigns from “Adapter 0”, “Adapter 1”... to “Adapter 5”, and ST4-TB may adopt maximum of 6 sets.

RAID: Default name is “VD_R0_1”. The options in the top-right corner may apply for “Modify” or “Restore”.

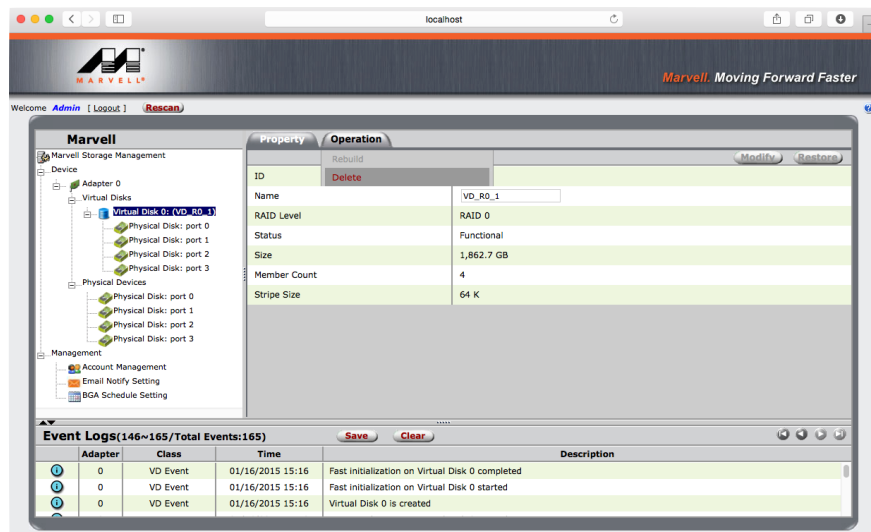
HDD ID: Each set of HDDs within will be indicated as 0, 1, 2 and 3.



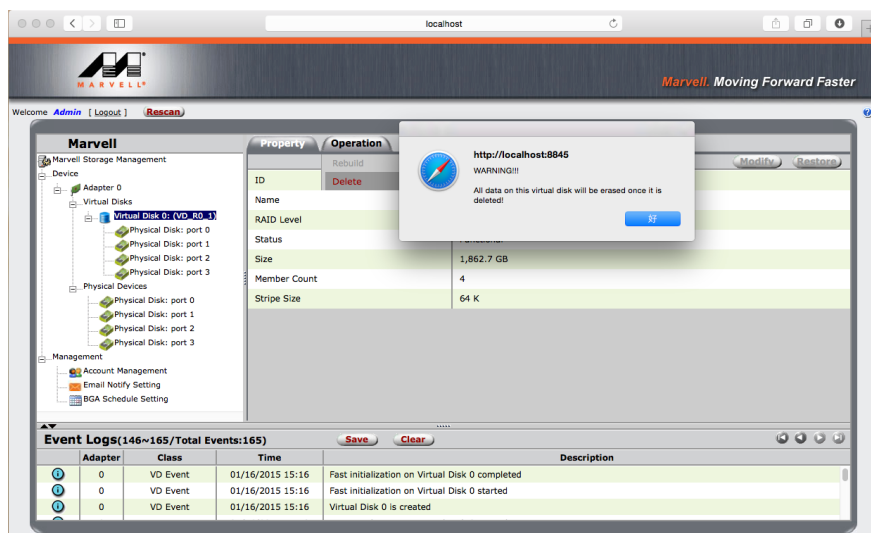
4. Deletion of RAID

Please backup stored data before deleting RAID, once RAID been deleted all data within shall be erased.

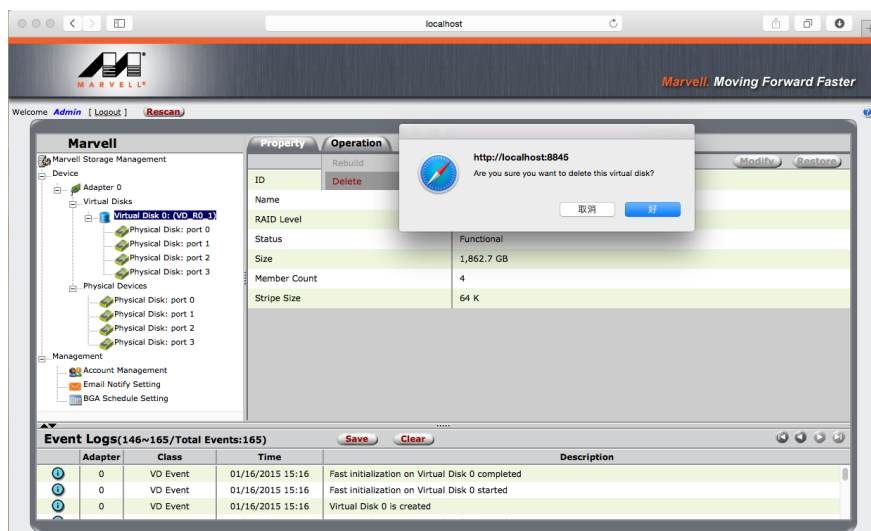
Step 1. On the left of managing window, please select the “Virtual Disk” from a RAID set which wish to be deleted. The option for “Delete” will appear once click the “Operation” tab on the right of managing window.



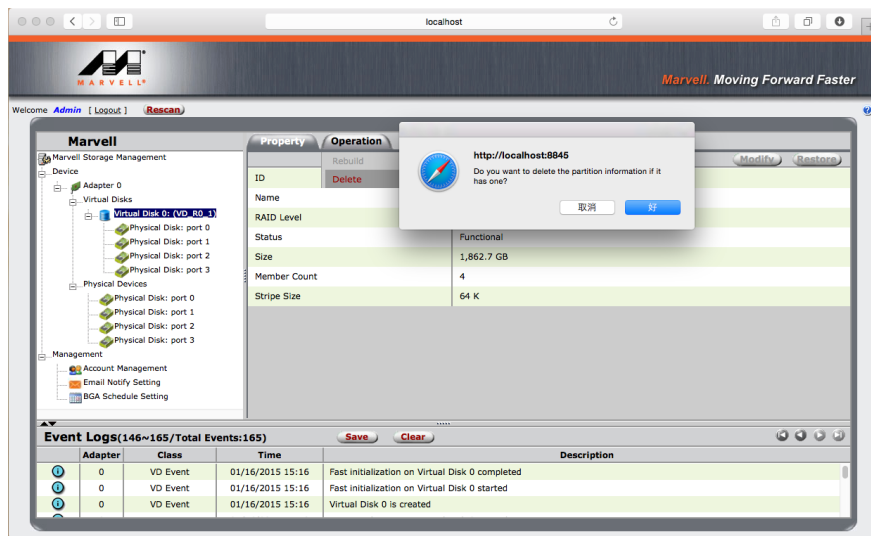
Step 2. Confirmation dialogue will appear for deletion.



Step 3. Second confirmation dialogue will appear to proceed with delete.



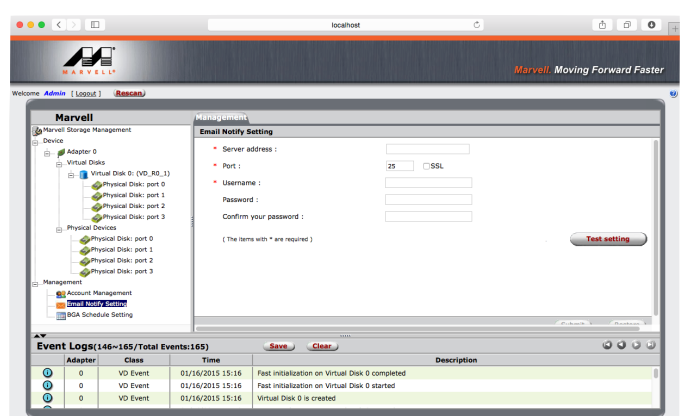
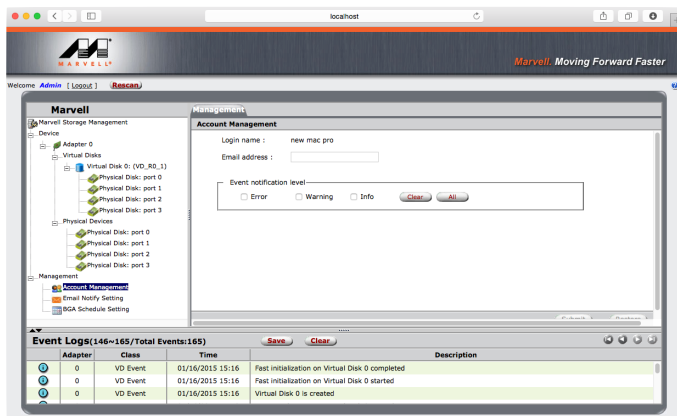
Step 4. Final confirmation dialogue will appear to delete partition information.



Step 5. After RAID has been deleted, each of the HDD will revert to original connecting status individually.

5. E-Mail Notifications.

Step 1. "Account Management" under "Management" on the left of managing window allows configuring for e-mail notification by sending "Event Logs" which generated during the operation of ST4-TB.



6. Visual Status Indicator Definitions

Status	Power LED	HDD LED
Power on / NO HDD	Blue On	N / A
Power on / HDD Idle	Blue On	Blue On
Power on / HDD Access	Blue On	Blue Blinks
Power on / HDD Fail	Blue On	N / A

7. Frequently Asked Questions

- ST4-TB will go into sleep mode when Thunderbolt cable is not connected, while fan and LED indication of ST4-TB will not be functioning until connecting with Thunderbolt cable.
- When ST4-TB goes into sleep mode that fan and LED indication of ST4-TB will not be functioning, until ST4-TB has been reactivated.
- If HDD was used for RAID in other devices, please revert the HDD to JBOD mode using original device/software before install in ST4-TB.
- If monitoring software is being active for a period of time without accessing, please proceed with refreshing or restarting the software for acquiring an updated status.
- If an older version of Marvell monitoring software has already been installed in the computer, please remove it completely before installing the monitoring software from product CD to avoid the occurrence of software corruptions.



www.stardom.com.tw

