

SOHORAID ZR2-B31A/B31/BA31

Hardware RAID Storage, Supports Two M.2 SATA Solid State Disk (SSD)

Compact and portable, comes with 4 RAID modes, suitable for various applications

ZR2-B31A/B31/BA31 hardware RAID storage, built-in high-speed USB3.2 Gen2 transmission interface, suitable for Mac and PC Operating platform.

With the ZR2's built in hardware RAID controller chipset and USB3.2 Gen2 host interface, it not only promise high transmission speed, but also eliminates the cross-platform usage issues. With hardware RAID, all data is computed and processed by the built-in CPU. With such advantages, your computer performance can be focused on running the software and work, instead of handling the storage device's transmission issues.

Features

1. Hardware RAID Storage.
2. Supports RAID 0/1/JBOD/BIG.
3. Support USB and Thunderbolt™ 3/4 Type-C host interface
4. Supports Two M.2 SATA Solid State Disk (SSD)
5. Hot-swappable disk tray with lock
6. LED Indicator for Disk Status Display.
7. Low noise Fan, with manual fan speed control switch.
8. Durable Aluminum structure design with silent fan for excellent heat dissipation.

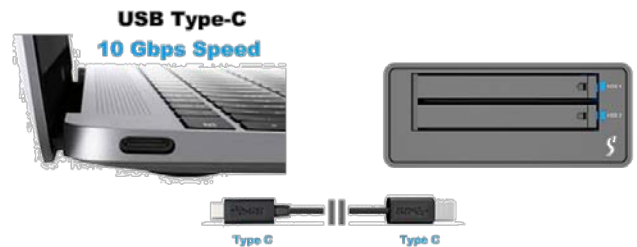
Hardware RAID Storage for Both Mac and PC

With the ZR2's built in hardware RAID controller chipset and USB3.2 Gen 2 host interface, it not only promise high transmission speed, but also eliminates the cross-platform usage issues associated with RAID 0 or RAID 1 setups.



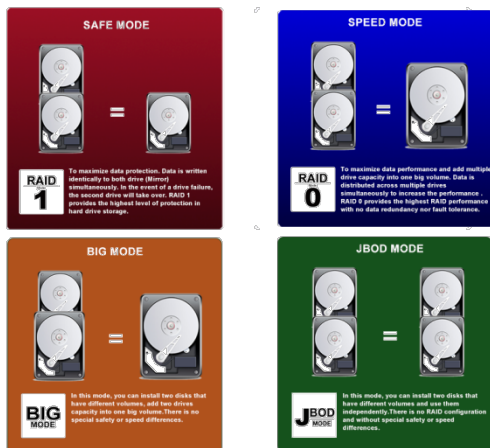
Supports USB and Thunderbolt™ 3/4 Type-C Host Interface

ZR2 is equipped with RAID controller and supports the host computers with USB Type-C and Thunderbolt™ 3/4 (USB-C), it compatible with all USB specifications.



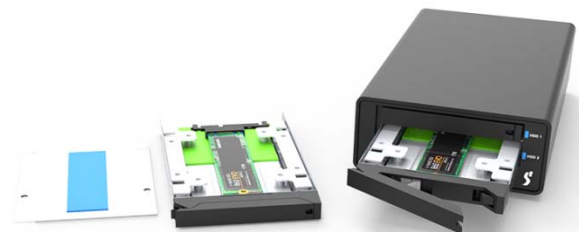
Supports Four RAID Modes

ZR2 has four built-in configuration modes: RAID 1 (Safe Mode), RAID 0 (Speed Mode), JBOD (Two Independent Volumes), and BIG Mode for you to choose according to your needs.



Hot-swappable Disk Tray

ZR2 is equipped with two easy-to-install hard drive trays for M.2 SATA Solid State Disk. Since this new easy-to-use Tray is dimensional compliant to all our Stardom products, you could easily transfer your data among different storage devices.



Product appearance description and specifications



- A. HDD access light
- B. HDD enclosure pin release
- C. HDD enclosure handle
- D. Fan
- E. RESET hole

- F. USB 3.2 Gen2 Type-C (10Gbps)
- G. RAID switch
- H. Fan speed switch
- I. Power socket
- J. Power switch

Interface	1 x USB 3.2 Gen2 Type-C
Compatible Disk	2 x M.2 SATA Solid State Disk (SSD) (2242/2260/2280)
Certification	CE / FCC
RAID Modes	RAID 1 / RAID 0 / JBOD / BIG
Operating System	Windows 7 or later, macOS 10.10 or later, Linux
Cooling System	1 x 3cm Low noise fan
Electrical and Operating Requirements	<ul style="list-style-type: none"> * Line voltage: 100-240V AC * Frequency: 50Hz to 60Hz, single phase * Maximum continuous power: 24W * Operating temperature: 32° to 104° F (0° to 40° C) * Storage temperature: -4° to 116° F (-20° to 47° C) * Relative humidity: 5% to 95% non-condensing
Dimension	Height: 41 mm Width: 97 mm Depth: 165.3 mm
Carton	10pcs per carton
Package Accessories	<ul style="list-style-type: none"> * 1 x ZR2-B31A/B31/BA31 * 1 x USB3.2 Gen 2 Type-C to C Cable (ZR2-B31/BA31) * 1 x USB3.2 Gen 2 Type-C to A Cable (ZR2-B31A/BA31) * 1 x Power Adapter * 1 x Power Code Cable * Accessory Kit * 1 x Quick Installation Guide