

## SOHORAID ZR2-B31BP-B/BA31BP-B

Hardware RAID Storage, Supports Two M.2 SATA Solid State Disk (SSD)  
Selectable Powered by USB Bus-powered or Direct Current (DC)

ZR2-B31BP-B/ZR2-BA31BP-B hardware RAID storage, built-in high-speed USB 3.2 Gen 2 transmission interface, and provide USB 3.2 Gen 2 Type-C to Type-C cable, suitable for Mac and PC Operating platform.

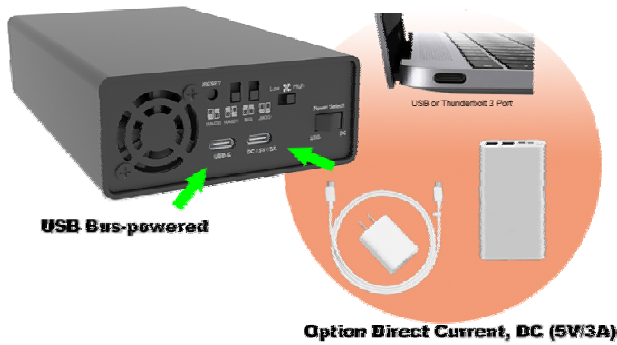
With the MR2's built in hardware RAID controller chipset and USB 3.2 Gen 2 host interface, it not only promise high transmission speed, but also eliminates the cross-platform usage issues. With hardware RAID, all data is computed and processed by the built-in CPU. With such advantages, your computer performance can be focused on running the software and work, instead of handling the storage device's transmission issues.

### Features

1. Hardware RAID Storage.
2. Selectable powered by USB Bus-powered or Direct Current (DC).
3. Supports RAID 0/1/JBOD/BIG.
4. Support USB and Thunderbolt™ 3 Type-C host interface
5. Supports Two M.2 SATA Solid State Disk (SSD)
6. Hot-swappable disk tray with lock
7. LED Indicator for Disk Status Display.
8. Low noise Fan, with manual fan speed control switch.
9. Durable Aluminum structure design with

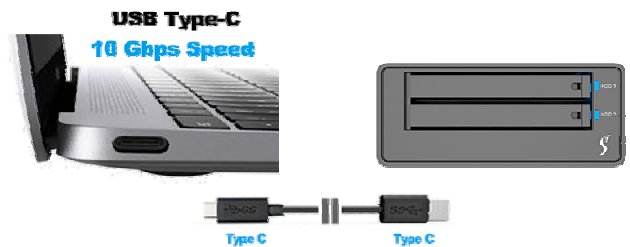
### Selectable Powered by USB Bus-powered or Direct Current (DC).

ZR2 provides two power input methods: USB Bus-powered and Direct Current (DC). Users can adjust the power input method according to own needs.



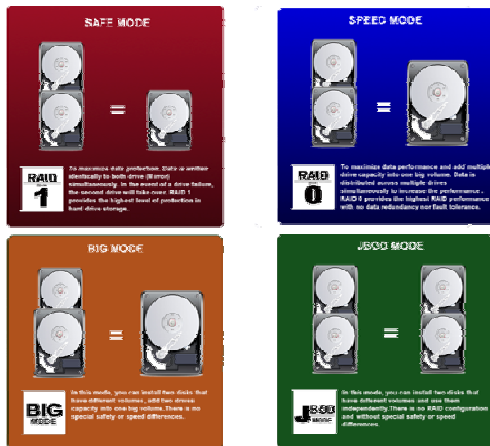
### Supports USB and Thunderbolt™ 3 Type-C Host Interface

ZR2 is equipped with RAID controller and supports the host computers with USB Type-C and Thunderbolt™ 3 (USB-C), it compatible with all USB 3.2 Gen 1,2/2.0 specifications.



### Supports Four RAID Modes

ZR2 has four built-in configuration modes: RAID 1 (Safe Mode), RAID 0 (Speed Mode), JBOD (Two Independent Volumes), and BIG Mode for you to choose according to your needs.

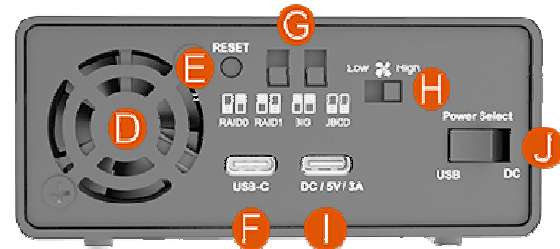


### Hot-swappable Disk Tray

ZR2 is equipped with two easy-to-install hard drive trays for M.2 SATA Solid State Disk. Since this new easy-to-use Tray is dimensional compliant to all our Stardom products, you could easily transfer your data among different storage devices.



## Product appearance description and specifications



- A. HDD access light
- B. HDD enclosure pin release
- C. HDD enclosure handle
- D. Fan
- E. RESET hole

- F. USB 3.1 Gen2 Type-C (10Gbps)
- G. RAID switch
- H. Fan speed switch
- I. USB Type-C for Power Input (Power Input only), DC /5V/ 3A
- J. Power Select

<b>Interface</b>	1 x USB 3.2 Gen2 Type-C
<b>Compatible Disk</b>	2 x M.2 SATA Solid State Disk (SSD) (Dimension: 2242/2260/2280)
<b>Certification</b>	CE / FCC
<b>RAID Modes</b>	RAID 1 / RAID 0 / JBOD / BIG
<b>Operating System</b>	Windows 7 or later, macOS 10.10 or later, Linux
<b>Cooling System</b>	1 x 3cm Low noise fan
<b>Electrical and Operating Requirements</b>	<ul style="list-style-type: none"> <li>* Line voltage: 100-240V AC</li> <li>* Frequency: 50Hz to 60Hz, single phase</li> <li>* Maximum continuous power: 15W</li> <li>    Selectable powered by USB Bus-powered or Direct Current (DC)</li> <li>* Operating temperature: 32° to 104° F (0° to 40° C)</li> <li>* Storage temperature: -4° to 116° F (-20° to 47° C)</li> <li>* Relative humidity: 5% to 95% non-condensing</li> </ul>
<b>Dimension</b>	Height: 41 mm    Width: 97 mm    Depth: 165.3 mm
<b>Product Code</b>	ZR2-B31BP-B EAN: UPC: ZR2-BA31BP-B EAN: UPC:
<b>Carton</b>	10pcs per carton
<b>Package Accessories</b>	<ul style="list-style-type: none"> <li>* 1 x ZR2-B31BP-B or ZR2-BA31BP-B (with two disk tray)</li> <li>* 1 x USB 3.2 Gen 2 Type-C to C Cable</li> <li>* 1 x USB 3.2 Gen 2 Type-C to A Cable (ZR2-BA31BP-B Only)</li> <li>* Accessory Kit</li> <li>* 1 x Quick Installation Guide</li> </ul>